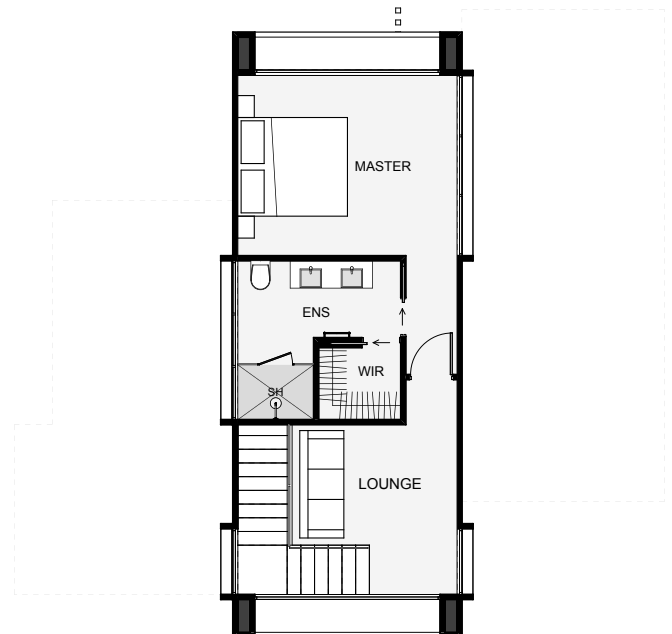
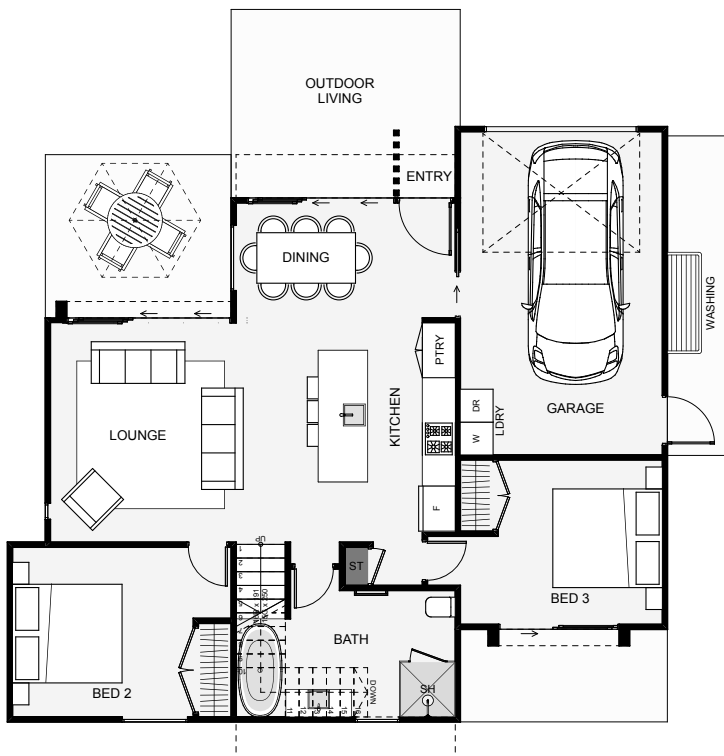


The Birds Nest



Two storeys of modern, slick architecture that will make anyone do a double take in the street. This home not only looks great, but fits it all inside a small footprint. Enjoy an open plan living with two ceiling heights, dual living spaces, the option to switch the garage to a double and an upstairs private master positioned for a view! If you like small, want a view and appreciate the finer things, this one has your name on it!



Ground Floor: 102m² Level 1: 37m² Total Floor Area: 139m²

1 car 3 beds 2 baths 2 living areas 12.0m x 10.8m

Call Ash: 027 424 8333
Email: ash@ajpbuilder.co.nz
www.ajpbuilder.co.nz

