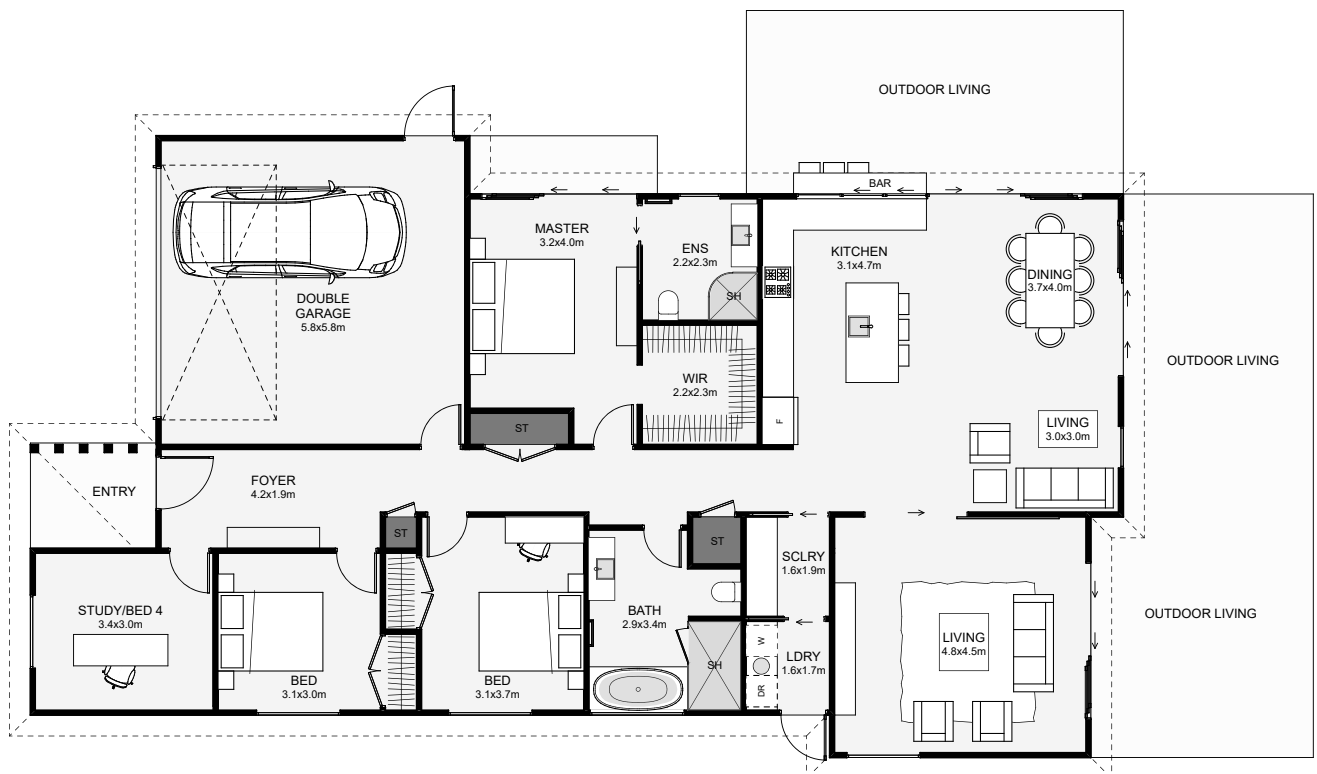




If your section has a southern entry point, read on! The main living, dining and kitchen are positioned for a great northern outlook with the optional outdoor kitchen bar for evenings with family and friends. Some other great features include the dual living, the master's large walk-in wardrobe, one extra wide bedroom which could easily fit a desk and an optional study close to the front door if you plan on working from home!



Floor Area: 199m²

 2
  4
  2
  2
 20.9m 11.9m

Contact us:

Ph: 027 424 8333

E: ash@ajpbuilders.co.nz

www.ajpbuilders.co.nz



AJP
CONSTRUCTION LTD