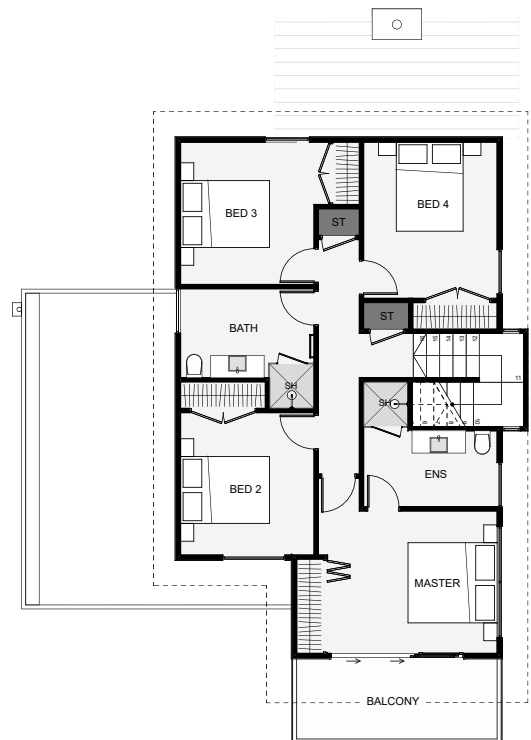
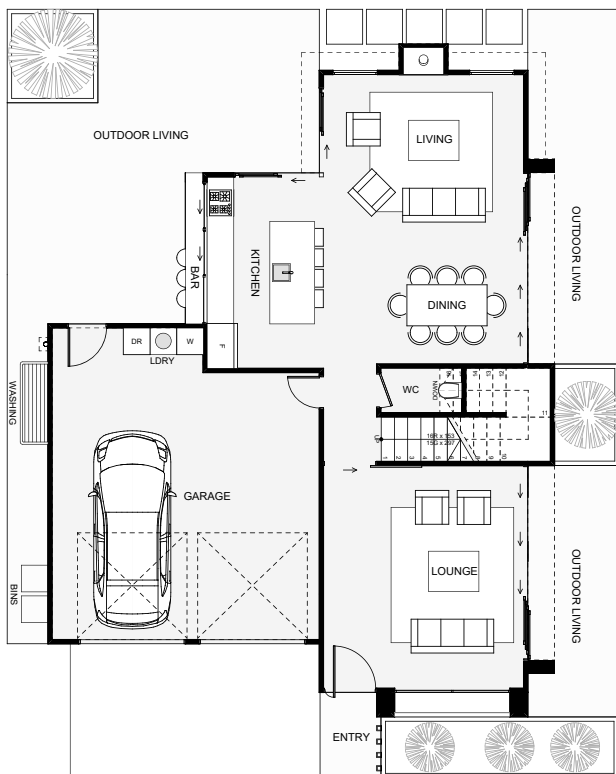




This modern, sleek four bedroom home packs a lot of features within its small footprint. The main living layout integrates seamlessly with dual outdoor living spaces which are designed around both morning and evening sun positions. Enjoy a view from the master balcony and its large slider door with overhead windows. This home looks great, is highly functional and could add a lot of value to your section!



Floor Area: 195m<sup>2</sup>

 2
  4
  2+
  2
  11.4m
  15.1m

Contact us:

Ph: 027 424 8333

E: ash@ajpbuilders.co.nz

www.ajpbuilders.co.nz



**AJP**  
CONSTRUCTION LTD