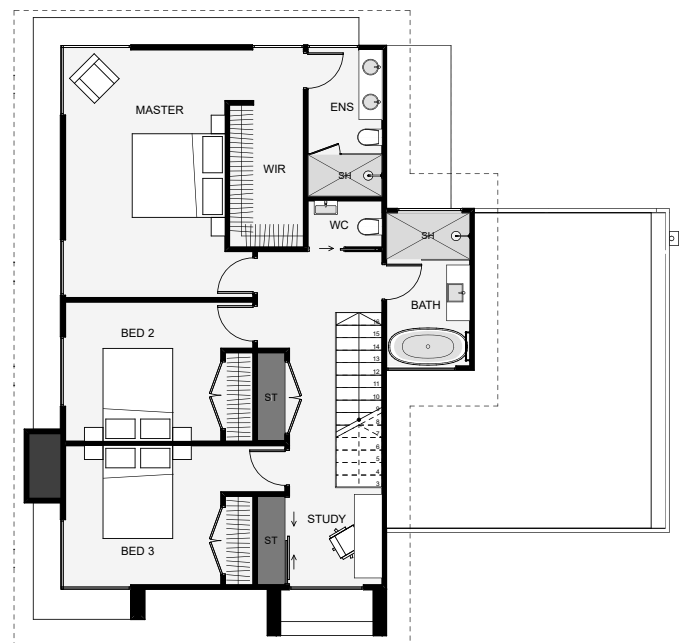
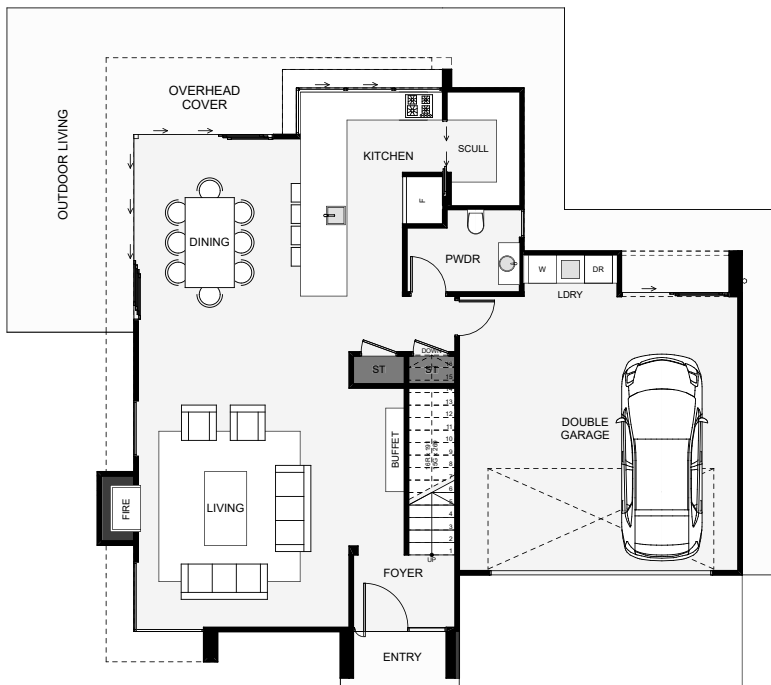




This ultra modern, three bedroom design looks like a large home from the outside thanks to the architectural styling, however, its just 206 square meters. The large extruding entry makes a real statement with fixed louvres giving the overhead study space some privacy from the street. Some features include a scullery, a large powder room for guests, a kitchen, an outdoor bar and plenty of storage throughout the home. If you like modern, this may fulfil your wish list!



Floor Area: 206m²

 2
  3+
  2+
  1
  13.9m
  13.1m

Contact us:

Ph: 027 424 8333

E: ash@ajpbuilders.co.nz

www.ajpbuilders.co.nz



AJP
CONSTRUCTION LTD